



Exterior view residential care campus

DUNHAM HOUSE

COMBAT WOUNDED CARE RESIDENCE



Dunham House, named in honor of Corporal Jason L. Dunham, USMC, who was awarded the Medal of Honor posthumously, is a combat wounded care residence with the mission of providing long term care for veterans to enjoy a high quality of life in their home. The site is a 40-acre rural site near 120th & Rainwood Road, northwest of Omaha, Nebraska. Specifically designed for those combat wounded Soldiers, Marines, Airmen, and Sailors who need assistance in living. Phase 1 will be two 12 bedroom homes (24 veterans) and a neighborhood center totaling 27,091 sq. ft. future phases within the 40 acres will total up to 100 veteran's homes.

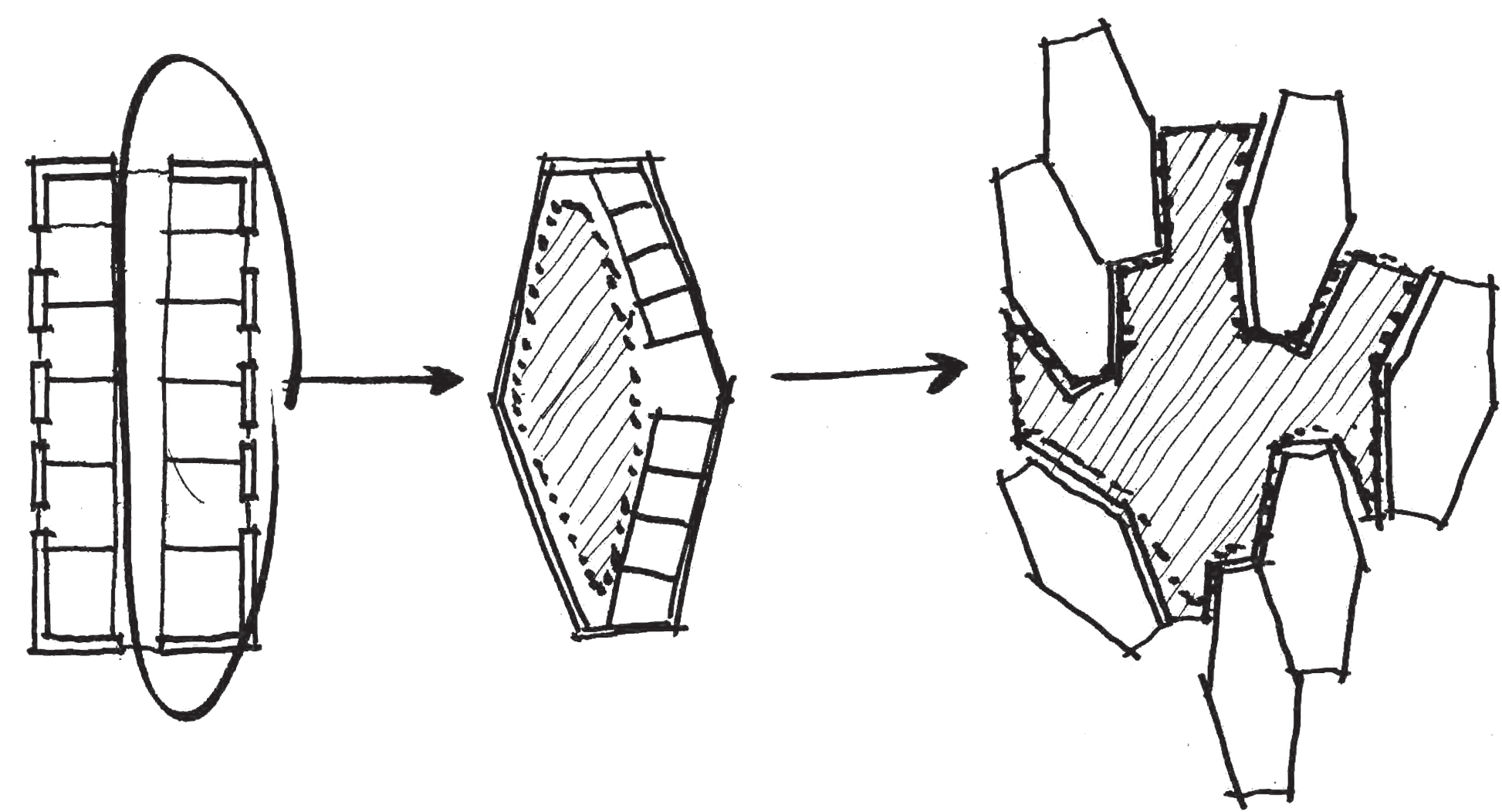
The VA Small House (SH) Model is a resident-centered model of care that puts the resident and family at the literal and figurative center of the household. This is a transformation away from the medical/institutional model that serves the needs of the institution and changes the focus to the needs of the resident at the center of work practices, care practices, and the environment of care. Care practices such as individualized meals and daily activity planning are central to the model.

Each small house is a planned community of 12 residents and a staff of highly trained care workers who live and work around the guiding principles of autonomy and dignity. The space of each home is organized towards a community-oriented interactive space transforming past models of reclusive, isolating layouts.

Contact Information:
 Dunham House
 11218 John Galt Boulevard Suite 106
 Omaha, NE 68137

Main Office:
 (402) 991-1949 (Phone)
 (402) 502-4872 (Fax)

To donate visit: Dunhamhouse.org



Typical Institutional model for long term care with no community space or environmental awareness

Residential home with indoor community gathering space and open views to the exterior

Residential care campus with outdoor community space mixed with the surrounding environment

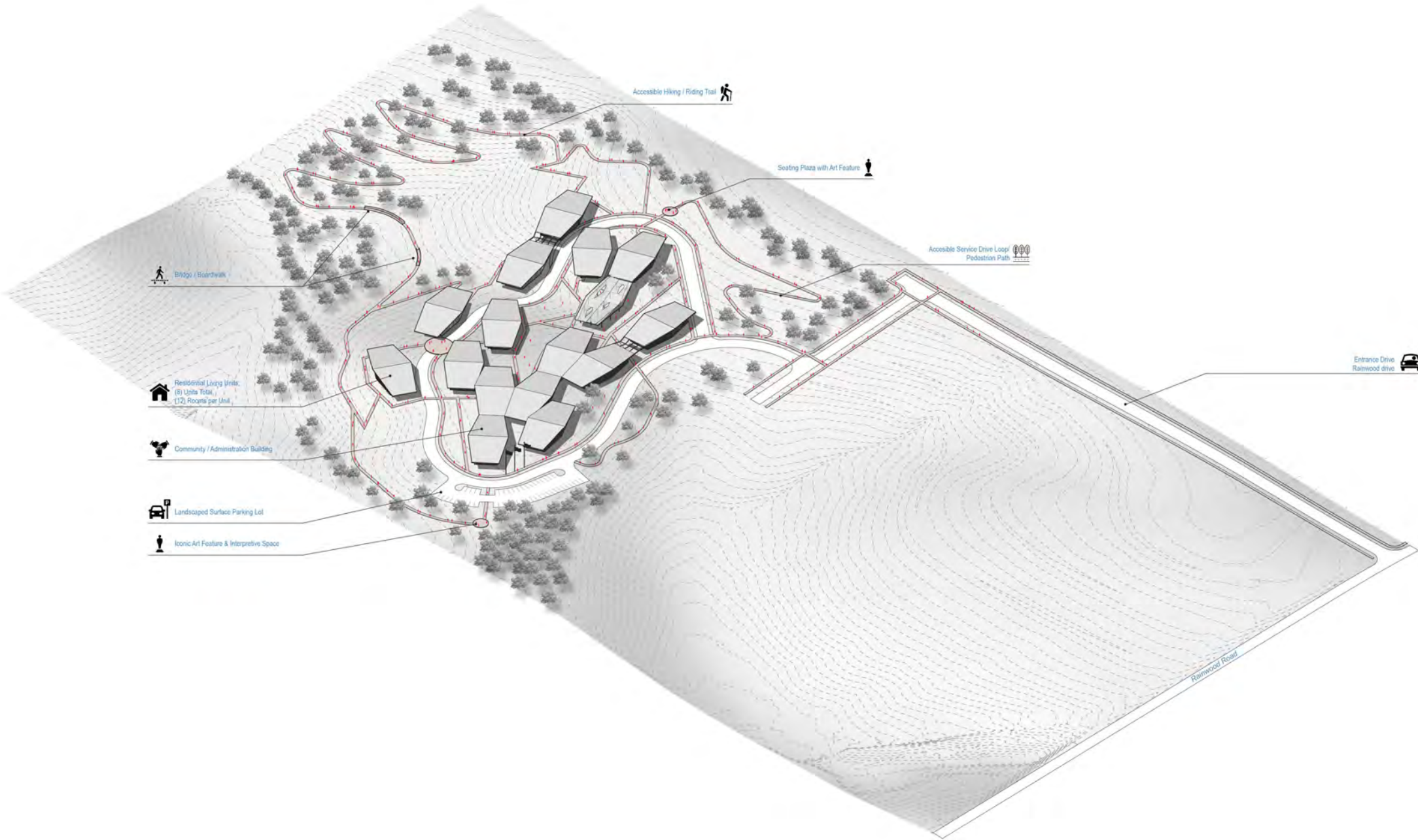




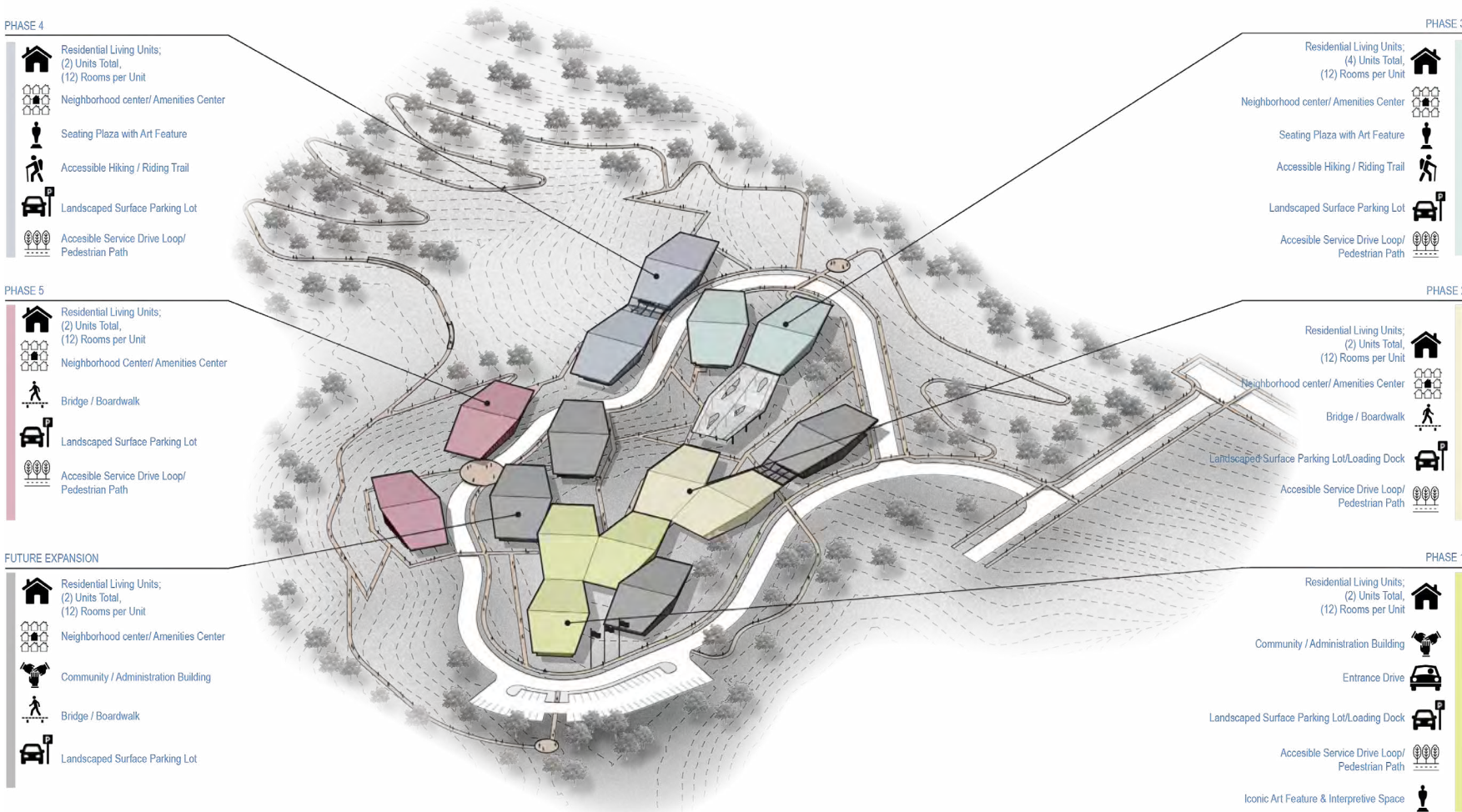
Interior view from the community space looking out.

"Greater love hath no man than this, that a man lay his life for his friends"

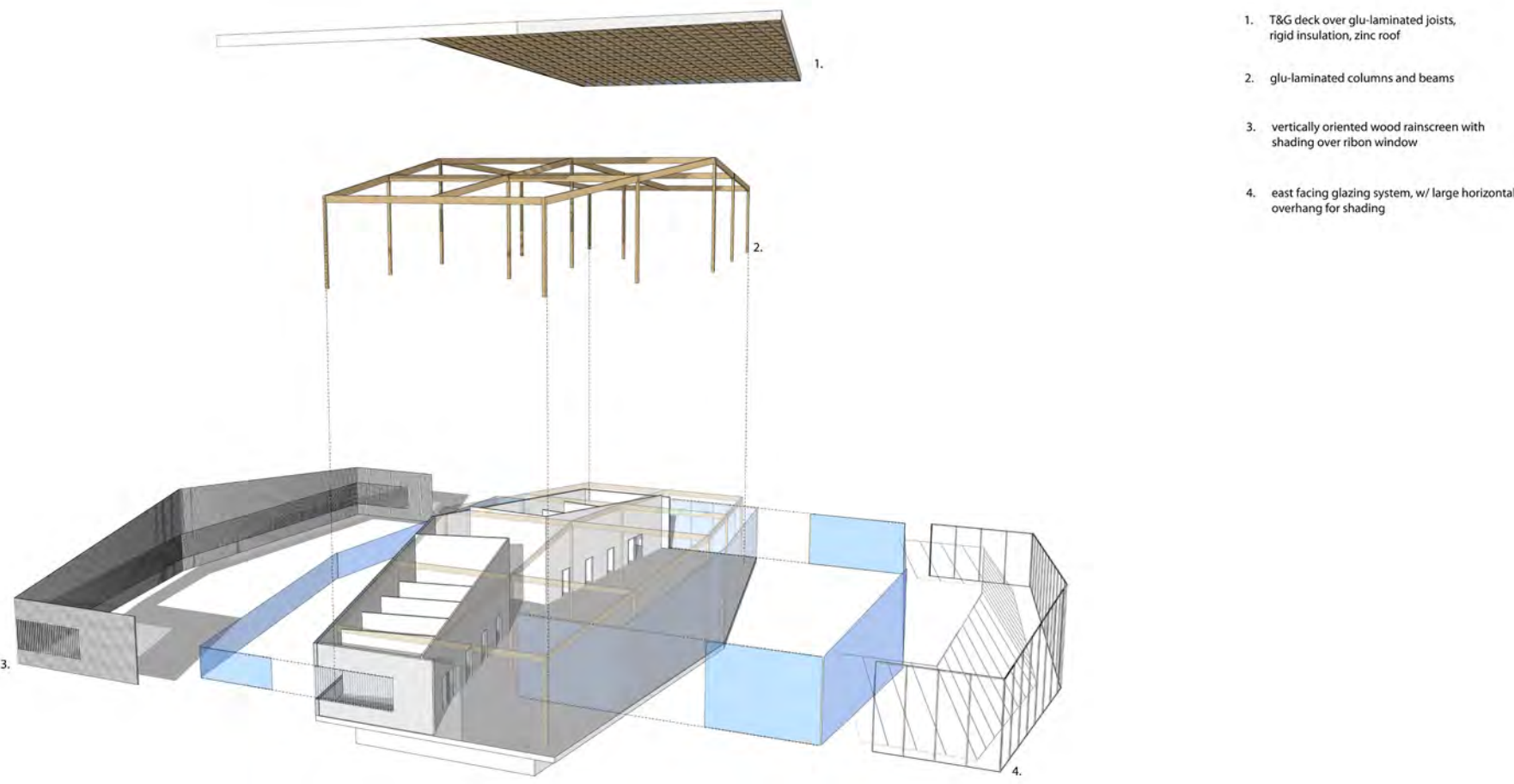
John 15:13



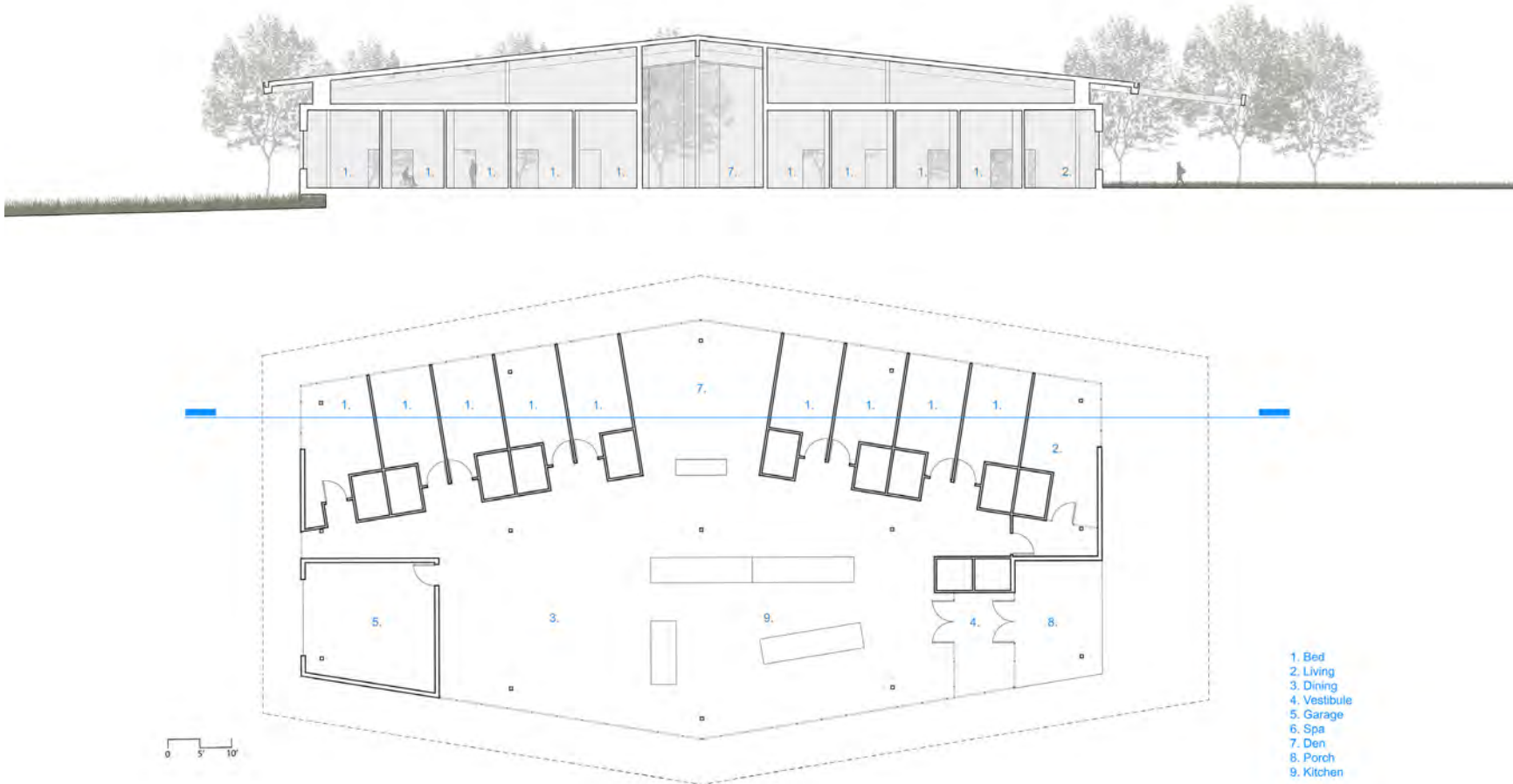
Proposed Master Plan



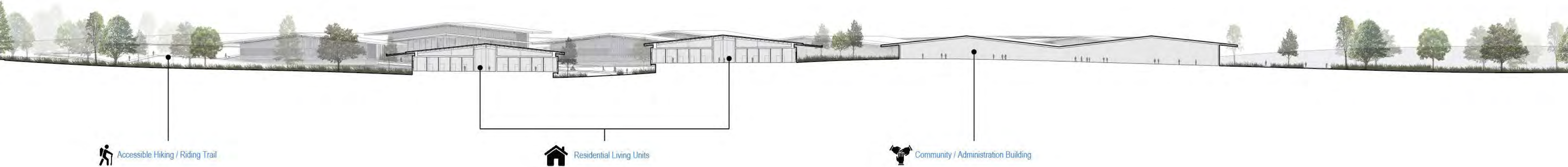
Proposed Phasing Plan



Proposed Program



Proposed Floor Plan



Accessible Hiking / Riding Trail

Residential Living Units

Community / Administration Building